

Path light



BECOSTAR
LIGHTING

PATH
LIGHT

IV

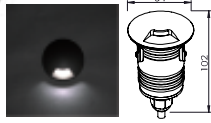
庭院灯

LIGHTING ARTISAN

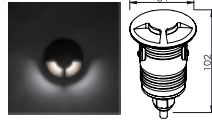
PATH LIGHT 庭院灯



BE-PAL0301A



BE-PAL0501B



Unit: mm

Item number 产品型号	Watts 功率	Input Volt 输入电压	CCT 色温	LED Lumens 光通量	Cable Length 电线长度	Cut out 开孔尺寸	Recess 安装深度
BE-PAL0301A	3W	12/24V	3000K	250lm	2m	D51	100
BE-PAL0301B	3W	12/24V	3000K	250lm	2m	D51	100
BE-PAL0501A	5W	12/24V	3000K	550lm	2m	D51	100
BE-PAL0501B	5W	12/24V	3000K	550lm	2m	D51	100

Features 产品特点

Aluminium Path Light

For outdoor path / decking / marker

LED: 5W / 3W

Color Temperature: 2700K / 3000K / 4000K

Finish: Matt Silver Anodized

IP rated: IP67

Cut out: D51 (for deck mounting)

12/24VDC input, built-in DC driver with 2M of power cable
(5W: Input wattage must be 3 times higher than the rated LED wattage to insure LED start-up)

3 year limited guarantee

铝制庭院灯

适用于户外：庭院、花园等区域

LED: 5W / 3W

色温：2700K / 3000K / 4000K

颜色：氧化雾银

防护等级：IP67

开孔尺寸：D51 (嵌入安装)

输入电压：12 / 24VDC；内置DC-DC驱动·自带配线长度2米
(注：因5W内置驱动启动电流要求较高，请保证电源功率高于灯具功率4倍)

3年有限整灯品质保证

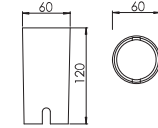
Patent 专利 #: ZL 2015 2 0276208.6 / ZL 2015 3 0124808.6

Optical Accessories 可选配件

Mounting sleeve 预埋件



WUAS01
Cut out size: D60mm
开孔尺寸: D60mm



Unit: mm

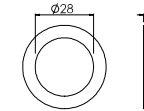
Anti-glare glass lens 光学配件



WUAG01F
Frosted glass lens
喷砂玻璃



WUAG01W
Silk-screen glass lens
丝印玻璃



Unit: mm

IP68 junction box 防水接线盒



JB2001
For single fixture installation
单灯安装



JB3001
For continuous fixtures installation
连续安装

Optional style 可选款式



BE-PAL0301C/0501C



BE-PAL0301D/0501D



BE-PAL0301E/0501E

Optional finish 可选颜色

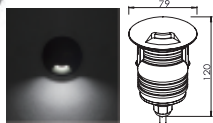


MB
Matt Black
氧化雾黑

PATH LIGHT 庭院灯



BE-PAL0801A



BE-PAL0901B



Unit: mm

Item number 产品型号	Watts 功率	Input Volt 输入电压	CCT 色温	LED Lumens 光通量	Cable Length 电线长度	Cut out 开孔尺寸	Recess 安装深度
BE-PAL0801A	8W	12/24V	3000K	750lm	2m	D65	115
BE-PAL0801B	8W	12/24V	3000K	750lm	2m	D65	115
BE-PAL0901A	9W	12/24V	3000K	1050lm	2m	D65	115
BE-PAL0901B	9W	12/24V	3000K	1050lm	2m	D65	115

Features 产品特点

Aluminium Path Light

For outdoor path / decking / marker

LED: 9W / 8W
Color Temperature: 2700K / 3000K / 4000K
Finish: Matt Silver Anodized
IP rated: IP67
Cut out: D65 (for deck mounting)

12/24VDC input, built-in DC driver with 2M of power cable
(9W: Input wattage must be 2 times higher than the rated LED wattage to insure LED start-up)

3 year limited guarantee

铝制庭院灯

适用于户外：庭院、花园等区域

LED: 9W / 8W
色温：2700K / 3000K / 4000K
颜色：氧化雾银
防护等级：IP67
开孔尺寸：D65 (嵌入安装)

输入电压：12 / 24VDC；内置DC-DC驱动·自带配线长度2米
(注：因9W内置驱动启动电流要求较高，请保证电源功率高于灯具功率3倍)

3年有限整灯品质保证

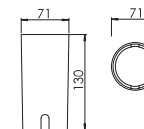
Patent 专利 #: ZL 2015 2 0276208.6 / ZL 2015 3 0124808.6

Optical Accessories 可选配件

Mounting sleeve 预埋件



WUAS02
Cut out size: D71mm
开孔尺寸: D71mm



Unit: mm

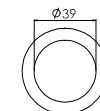
Anti-glare glass lens 光学配件



WUAG02F
Frosted glass lens
喷砂玻璃



WUAG02W
Silk-screen glass lens
丝印玻璃



Unit: mm

IP68 junction box 防水接线盒



JB2001
For single fixture installation
单灯安装



JB3001
For continuous fixtures installation
连续安装

Optional style 可选款式



BE-PAL0801C/0901C



BE-PAL0801D/0901D



BE-PAL0801E/0901E

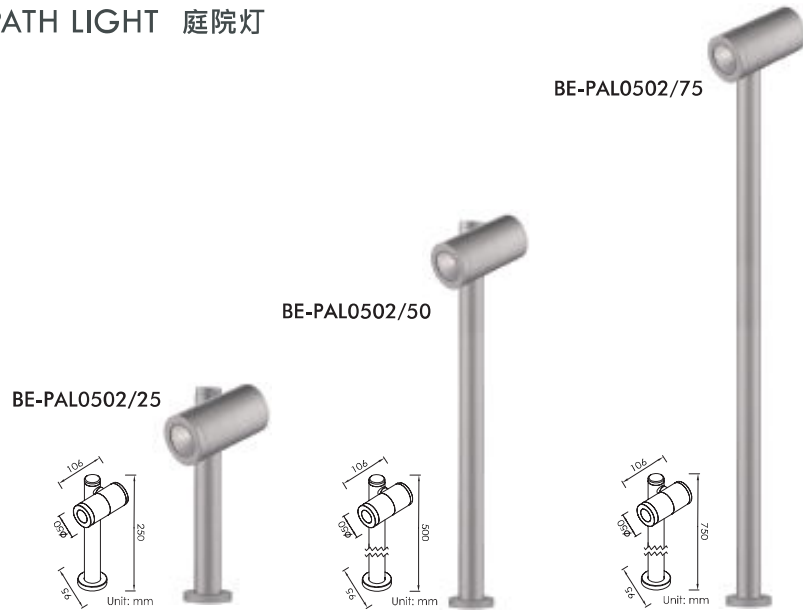
Optional finish 可选颜色



MB
Matt Black
氧化雾黑



PATH LIGHT 庭院灯



Item number 产品型号	Watts 功率	Input Volt 输入电压	CCT 色温	LED Lumens 光通量	Beam Angle 光束角	Diameter 直径	Stem Length 灯杆长度
BE-PAL0502/25	5W	12/24V	3000K	550lm	24°	D50	250
BE-PAL0502/50	5W	12/24V	3000K	550lm	24°	D50	500
BE-PAL0502/75	5W	12/24V	3000K	550lm	24°	D50	750

Features 产品特点

Aluminium Path Light

For outdoor / path / access / spot / landscape

LED: 5W
Beam Angle: 24° / 40° / 60°
Color Temperature: 2700K / 3000K / 4000K
Finish: Matt Silver Anodized
IP rated: IP65

12/24VDC input, built-in IP68 junction box for wire connecting (Input wattage must be 3 times higher than the rated LED wattage to insure LED start-up)

3 year limited guarantee

铝制庭院灯

适用于户外：庭院、花园等区域

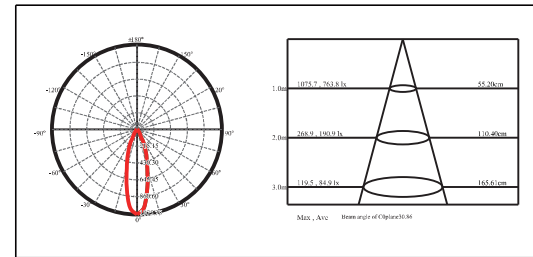
LED: 5W
光束角：24° / 40° / 60°
色温：2700K / 3000K / 4000K
颜色：氧化雾银
防护等级：IP65

输入电压：12 / 24VDC；内置IP68防水接线盒
(注：因内置驱动启动电流要求较高，请保证电源功率高于灯具功率4倍)

3年有限整灯品质保证

Patent 专利 #: ZL 2015 2 0280930.7 / ZL 2015 3 0124478.0

Optical Specification 配光曲线

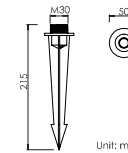


Optical Accessories 可选配件

Spike 地插



PAAS01



Unit: mm

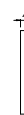
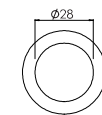
Anti-glare glass lens 光学配件



WUAG01F
Frosted glass lens
喷砂玻璃



WUAG01W
Silk-screen glass lens
丝印玻璃



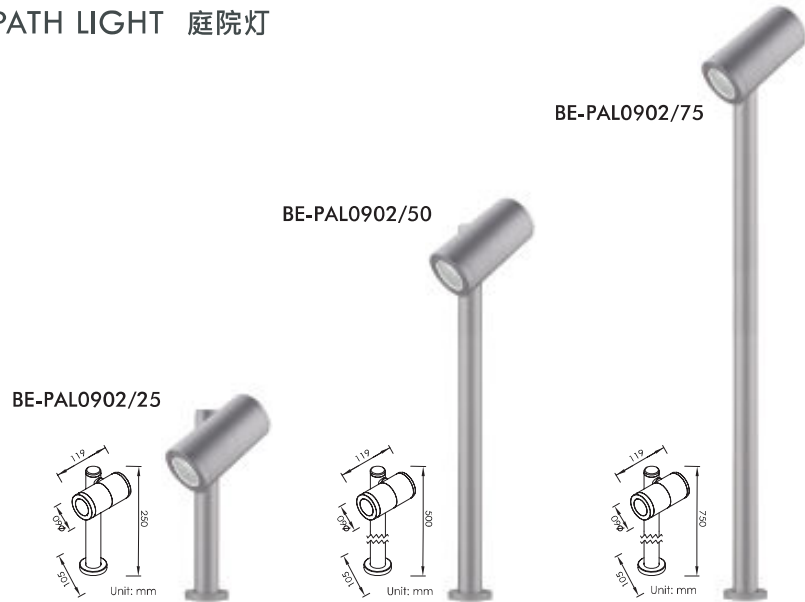
Unit: mm

Optional finish 可选颜色



MB
Matt Black
氧化雾黑

PATH LIGHT 庭院灯



Item number 产品型号	Watts 功率	Input Volt 输入电压	CCT 色温	LED Lumens 光通量	Beam Angle 光束角	Diameter 直径	Stem Length 灯杆长度
BE-PAL0902/25	9W	12/24V	3000K	1050lm	20°	D60	250
BE-PAL0902/50	9W	12/24V	3000K	1050lm	20°	D60	500
BE-PAL0902/75	9W	12/24V	3000K	1050lm	20°	D60	750

Features 产品特点

Aluminium Path Light

For outdoor / path / access / spot / landscape

LED: 9W
Beam Angle: 20° / 30° / 38°
Color Temperature: 2700K / 3000K / 4000K
Finish: Matt Silver Anodized
IP rated: IP65

12/24VDC input, built-in IP68 junction box for wire connecting (Input wattage must be 2 times higher than the rated LED wattage to insure LED start-up)

3 year limited guarantee

铝制庭院灯

适用于户外：广场、走道、庭院、花园区域

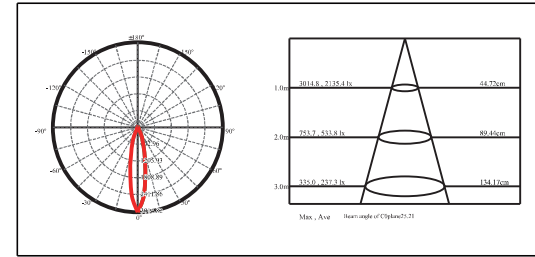
LED: 9W
光束角：20° / 30° / 38°
色温：2700K / 3000K / 4000K
颜色：氧化雾银
防护等级：IP65

输入电压：12 / 24VDC；内置IP68防水接线盒
(注：因内置驱动启动电流要求较高，请保证电源功率高于灯具功率3倍)

3年有限整灯品质保证

Patent 专利 #: ZL 2015 2 0280930.7 / ZL 2015 3 0124478.0

Optical Specification 配光曲线

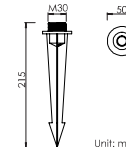


Optical Accessories 可选配件

Spike 地插



PAAS01



Unit: mm

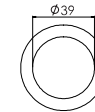
Anti-glare glass lens 光学配件



WUAG02F
Frosted glass lens
喷砂玻璃



WUAG02W
Silk-screen glass lens
丝印玻璃



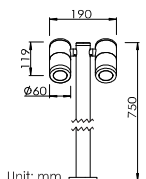
Unit: mm

Optional finish 可选颜色

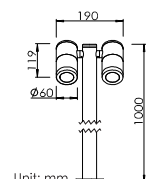


MB
Matt Black
氧化雾黑

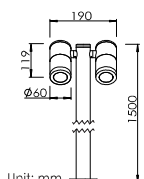
PATH LIGHT 庭院灯



Unit: mm
BE-PAL0902D/75



Unit: mm
BE-PAL0902D/100



Unit: mm
BE-PAL0902D/150

Item number 产品型号	Watts 功率	Input Volt 输入电压	CCT 色温	LED Lumens 光通量	Beam Angle 光束角	Diameter 直径	Stem Length 灯杆长度
BE-PAL0902D/75	2x9W	12/24V	3000K	2x1050lm	20°	D60	750
BE-PAL0902D/100	2x9W	12/24V	3000K	2x1050lm	20°	D60	1000
BE-PAL0902D/150	2x9W	12/24V	3000K	2x1050lm	20°	D60	1500

Features 产品特点

Aluminium Path Light

For outdoor / path / access / spot / landscape

LED: 2x9W
Beam Angle: 20° / 30° / 38°
Color Temperature: 2700K / 3000K / 4000K
Finish: Matt Silver Anodized
IP rated: IP65

12/24VDC input, built-in IP68 junction box for wire connecting (Input wattage must be 2 times higher than the rated LED wattage to insure LED start-up)

3 year limited guarantee

铝制庭院灯

适用于户外：庭院、花园等区域

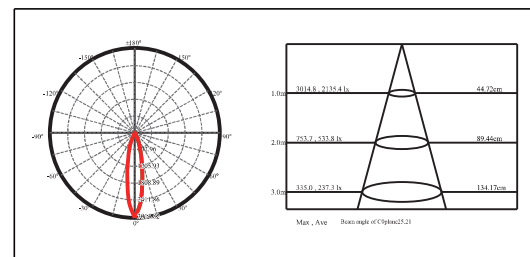
LED: 2x9W
光束角：20° / 30° / 60°
色温：2700K / 3000K / 4000K
颜色：氧化雾银
防护等级：IP65

输入电压：12 / 24VDC；内置IP68防水接线盒
(注：因内置驱动启动电流要求较高，请保证电源功率高于灯具功率3倍)

3年有限整灯品质保证

Patent 专利 #: ZL 2015 2 0280930.7 / ZL 2015 3 0124478.0

Optical Specification 配光曲线

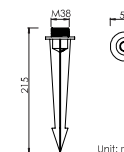


Optical Accessories 可选配件

Spike 地插



PAAS02



Unit: mm

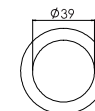
Anti-glare glass lens 光学配件



WUAG02F
Frosted glass lens
喷砂玻璃



WUAG02W
Silk-screen glass lens
丝印玻璃



Unit: mm

Optional finish 可选颜色



MB
Matt Black
氧化雾黑



PATH LIGHT 庭院灯



Item number 产品型号	Watts 功率	Input Volt 输入电压	CCT 色温	LED Lumens 光通量	Beam Angle 光束角	Diameter 直径	Stem Length 灯杆长度
BE-PAL1502/25	15W	24V	3000K	1650lm	15°	D65	250
BE-PAL1502/50	15W	24V	3000K	1650lm	15°	D65	500
BE-PAL1502/75	15W	24V	3000K	1650lm	15°	D65	750

Features 产品特点

Aluminium Path Light

For outdoor / path / access / spot / landscape

LED: 15W
Beam Angle: 15° / 24° / 38° / 60°
Color Temperature: 2700K / 3000K / 4000K
Finish: Matt Black Anodized
IP rated: IP65

24VDC input, built-in IP68 junction box for wire connecting (Input wattage must be 2 times higher than the rated LED wattage to insure LED start-up)

3 year limited guarantee

铝制小路灯

适用于户外：庭院、花园等区域

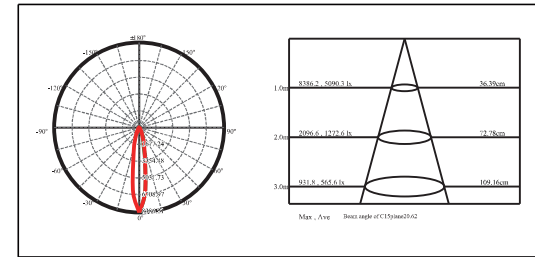
LED: 15W
光束角：15° / 24° / 38° / 60°
色温：2700K / 3000K / 4000K
颜色：氧化雾黑
防护等级：IP65

输入电压：24VDC；内置IP68防水接线盒
(注：因内置驱动启动电流要求较高，请保证电源功率高于灯具功率3倍)

3年有限整灯品质保证

Patent 专利 #: ZL 2015 2 0280930.7 / ZL 2015 3 0124478.0

Optical Specification 配光曲线

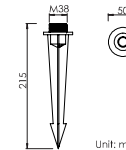


Optical Accessories 可选配件

Spike 地插



PAAS02



Unit: mm

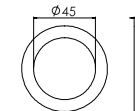
Anti-glare glass lens 光学配件



PAAG01F
Frosted glass lens
喷砂玻璃



PAAG01W
Silk-screen glass lens
丝网玻璃



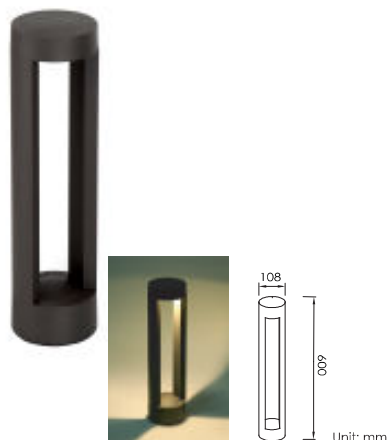
Unit: mm

Optional finish 可选颜色

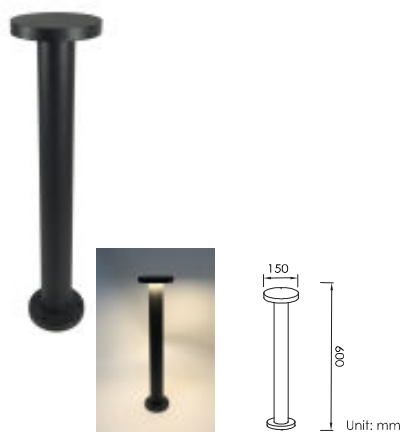


MS
Matt Silver
氧化雾银

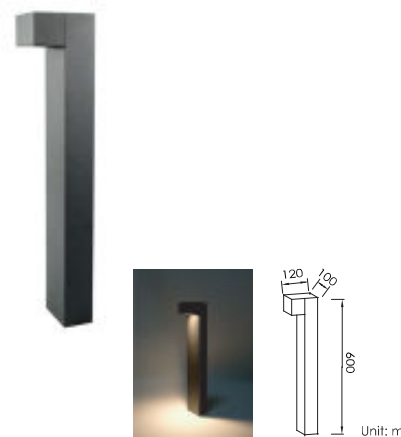
POST LIGHT 庭院灯



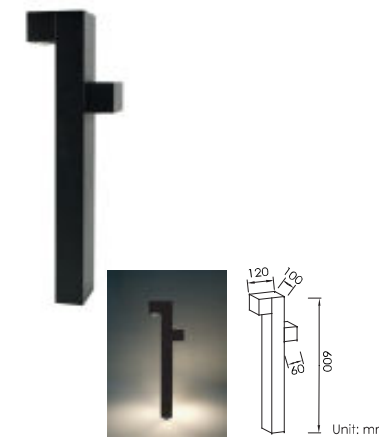
BE-POM0501



BE-POM1201



BE-POM0502



BE-POM0502D

Item number 产品型号	Watts 功率	Input Volt 输入电压	CCT 色温	LED Lumens 光通量	Diameter 直径	Height 高度
BE-POM0501	5W	220-240VAC	3000K	500lm	108	600
BE-POM1201	12W	220-240VAC	3000K	1200lm	150	600

Item number 产品型号	Watts 功率	Input Volt 输入电压	CCT 色温	LED Lumens 光通量	Cast 灯体尺寸	Height 高度
BE-POM0502	5W	220-240VAC	3000K	500lm	120x100	600
BE-POM0502D	2x5W	220-240VAC	3000K	2x500lm	120x100	600

Features 产品特点

Main Voltage Aluminium Post Light
For outdoor / path / access / landscape

LED: 5W / 12W
Color Temperature: 2700K / 3000K / 4000K
Finish: Powder Coated Black
IP rated: IP65

220-240VAC input, supplied with driver

3 year limited guarantee

高压铝制庭院灯
适用于户外：庭院、花园等区域

LED: 5W / 12W
色温：2700K / 3000K / 4000K
颜色：喷粉黑
防护等级：IP65

输入电压：220-240VAC；内置驱动

3年有限整灯品质保证

Features 产品特点

Main Voltage Aluminium Post Light
For outdoor / path / access / landscape

LED: 5W / 2x5W
Color Temperature: 2700K / 3000K / 4000K
Finish: Powder Coated Black
IP rated: IP65

220-240VAC input, supplied with driver

3 year limited guarantee

高压铝制庭院灯
适用于户外：庭院、花园等区域

LED: 5W / 2x5W
色温：2700K / 3000K / 4000K
颜色：喷粉黑
防护等级：IP65

输入电压：220-240VAC；内置驱动

3年有限整灯品质保证

